



# Sounds from the South

Newsletter of Rushen Silver Band

April 2014



## Concert for Manx Blind Welfare - March 2014

The Band performed a joint concert with the Lon Dhoo Male Voice Choir at the new St Ninian's Lower School, Bemahague, Onchan, on Saturday 8<sup>th</sup> March 2014. The concert featured individual performances from both the Band and Choir, as well as a number of joint items.

A good turnout for the concert resulted in over £800 being raised for the charity.

Pictures from the concert are now on the Band's website



[www.rushensilverband.org.im](http://www.rushensilverband.org.im), and there is also a video taken of the Band during the concert available to view on the band's Facebook page

Free Admission  
Rushen Silver Band  
**Spring Concert**  
Sunday 6<sup>th</sup> April  
7.45pm  
at Rushen Primary School  
Retiring collection in aid of band funds

## Spring Concert - 6th April 2014

The Band will be performing a Spring Concert on Sunday 6<sup>th</sup> April at Rushen Primary School. The concert starts at 7.45pm, and will feature soloists playing in the Manx Music Festival as well as a preview of the full band's entry.

Admission to the concert is free of charge, with a retiring collection for Band funds.



## Friends of RSB Coffee Morning

The Friends of Rushen Silver Band held a Coffee Morning on Saturday 22<sup>nd</sup> February at St Catherine's Church Hall, Port Erin. Thanks to everyone who came along to support the Coffee Morning, and a special thanks to all those involved in organising and running the event. A superb total of over £520 was raised by the 'Friends of RSB'.

## **Trombonology?!**

*We talk with **Juan Wright** about his experience of the Brass Band world and advantages of playing the trombone...*



### **What brought you into the world of brass band music?**

**JW:** I was originally introduced to the world of brass band music as a youngster through my late Uncle, who used to play percussion with the Salvation Army Band. I accompanied him to a few rehearsals and once I was able to produce a few notes found myself sat in with the Salvation Army Band.

After a brief break from banding, I attended the Opening Ceremony of the Inter-Island Games in 1985 which included a massed band directed by Onchan Silver Band's conductor at that time Gordon Astill. I was greatly taken by the Band's rousing sound as they led the assembled athletes in procession around the stadium. I must have talked incessantly to my parents about the experience because a few weeks later I attended my first rehearsal with Onchan Silver's Junior Band. The rest as they say is history...

### **Where do you believe you got your musical talents from?**

**JW:** This is a tricky one! My Mum played piano and sang as a child and this is maybe where the more theoretical side of my musical ability probably comes from. She remains a keen music lover and concertgoer who has continued to be very supportive of my musical endeavours over the years.

My Dad had aspirations to play blues guitar many years ago, but never seemed to find the time. He has what I'd describe as an eclectic taste in the music he listens to which ranges from The Blues and Jazz to Jean Michel Jarre and I'm sure this influenced my musical development. I also think Dad's drama background (he studied PE and Drama as part of his Teacher Training) is possibly where I get my performance talents from!

### **Even though you've been playing for a number of years, you've only recently joined RSB, how have you found it?**

**JW:** As readers may or may not know I joined RSB in December 2012. I am greatly enjoying playing with the Band and I've been made to feel really welcome since joining. There's a real buzz of enthusiasm around the Band, and this is infectious. Shortly after I joined, the final preparations began in readiness for the CD recording in March. This was a wonderful experience and the final result is a true testament to all those who work so hard in so many ways for RSB.

The efficient organisation side of RSB is a refreshing change too. Over the years, I am sad to say I've seen politics play far too bigger part in other brass bands, usually at the cost of the music!

### **You're playing 1st trombone with RSB, but has it always been the trombone you've played and if so, what was the attraction?**

**JW:** I was originally started off on baritone with the Salvation Army. After a brief spell on a very battered flugel horn at Onchan Silver Band (it later transpired that the instrument had been run over a number of years earlier!); the instrument literally fell apart and I was again given a baritone.

Onchan Silver Band had several promising trombonists at this time and a good friend who played the trombone told me he had just started to have brass lessons at secondary school. This, along

with hearing the famous trombone solo 'The Acrobat', led to me asking to change from baritone to trombone.

My initial request fell on deaf ears (no pun intended!) and it was only when I actually began having brass lessons when I started at secondary school, that I relayed my wish to learn the trombone to Steve Wortley (himself a former principal trombonist with the RLPO) who was at that time Head of Brass and Percussion for the Department of Education's Music Service. Within minutes he had given me a trombone and I was playing through some basic well known beginner tunes to get myself familiar with the slide positions.

Delighted to now have a trombone to play on, I turned up to the next Band rehearsal with my trombone, and met with disapproval from the Band's conductor. I had turned up with a gold lacquered instrument to a Silver Band! He disappeared off to a back room and appeared with a silver trombone and I was given some stern words from him telling me that if I was going to play trombone in the Band I would be playing on a silver instrument!

I learnt to read bass clef and this opened up a whole host of ensembles that had not been available to me as a baritone player; I joined the Manx Youth Orchestra, the Wind Orchestra, Swing Band and played in a number of brass groups. I have also performed as a soloist on the trombone, competing in several classes at the Guild and also in the Young Musician of Mann competition. Ultimately the trombone gives me the opportunity to play in a number of different musical environments, be it a brass band, jazz, classical, shows or even pop!

### **For the interest of our readers, can you explain a bit about your day job?**

**JW:** Well, since September 2009 I have worked at Castle Rushen High School. Initially this was a cover supervisor with some involvement in music at the school. I got involved to help keep some of the extra-curricular music clubs going whilst the music department were heavily involved with their production of 'Thick as a Brick' in November 2009.

In September 2013, I began a new role as trainee teacher of music studying part-time at the IOM College while I am working. I am extremely grateful to Castle Rushen for supporting me in my studies. I feel very lucky to be in a position to pass on my enthusiasm and passion for music, and to be able to see students progress through school and go onto pursue their chosen studies and careers. In a number of cases this is doubly rewarding as these students are also members of RSB too!

### **Thank you to Ronaldsway Aircraft Company**



The Band currently have a music library of over 1,250 pieces, each of which require to be kept in a plastic envelope to ensure the musical parts last for as long as possible. Because of the size of the music, it is not possible to obtain suitably sized envelopes from normal suppliers, and with the Band either purchasing or receiving around 50+ new pieces a year, the need for such envelopes is forever on the increase. Step in Ronaldsway Aircraft Company Ltd.

The members of the Band would like to say a big thank you to the staff at Ronaldsway Aircraft Company Ltd,

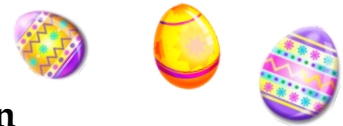


especially Mel Scott, for providing a batch of plastic envelopes free of charge to help us out.

## Dates for your Diary



Sunday 6 <sup>th</sup> April	<b>Spring Concert</b> (at Rushen Primary School, Port Erin)	8.00pm
Sunday 27 <sup>th</sup> April	<b>Manx Music Festival – Brass Band Classes</b> (at Villa Marina, Douglas)	Evening
Sunday 11 <sup>th</sup> May	<b>Ballafesson Brass</b> (at Southlands Resource Centre)	2.30pm
Thursday 15 <sup>th</sup> May	<b>Arts Council Summer Season Concert</b> (at Villa Marina Arcade, Douglas)	8.00pm
Thursday 22 <sup>nd</sup> May	<b>Church Fundraising Concert</b> (at Castletown Methodist Church)	8.00pm
Friday 23 <sup>rd</sup> May	<b>Ballafesson Brass</b> (at The Howe Chapel)	7.00pm
Friday 13 <sup>th</sup> June	<b>Kerrowkeil Chapel 200<sup>th</sup> Anniversary Concert</b> (at Kerrowkeil Chapel)	8.00pm
Sunday 22 <sup>nd</sup> June	<b>Open Air Anniversary Service</b> (at Ballakilpheric Chapel)	3.00pm
Saturday 28 <sup>th</sup> June	<b>Friends of the Band Coffee Morning</b> (at St Mary's Church Hall, Port St Mary)	10.00am
Saturday 28 <sup>th</sup> June	<b>Fundraising Concert for the Salvation Army</b> (at Salvation Army Citadel, Lord St, Douglas)	7.30pm
Thursday 3 <sup>rd</sup> July	<b>Flower Festival Concert</b> (at St Columba's Church, Port Erin)	8.00pm
Sunday 13 <sup>th</sup> July	<b>Premiere of commissioned work by Alan Fernie for Island of Culture Celebration</b> (at Rushen Primary School, Port Erin)	3.00pm



### Caption competition

Winning entry from the caption competition came from Martin Norbury himself:

*“Martin was double booked with a Commissioners' meeting and hoped no-one would notice it was him”*

Thanks Martin ☺



For more information about Rushen Silver Band or suggestions for the Sounds from the South newsletter, please contact the Band Secretary – Peter Faragher, Kinvara, 16 Close Cam, Port Erin, IM9 6NB.  
Tel: 493193. Email: [secretary@rushensilverband.org.im](mailto:secretary@rushensilverband.org.im)